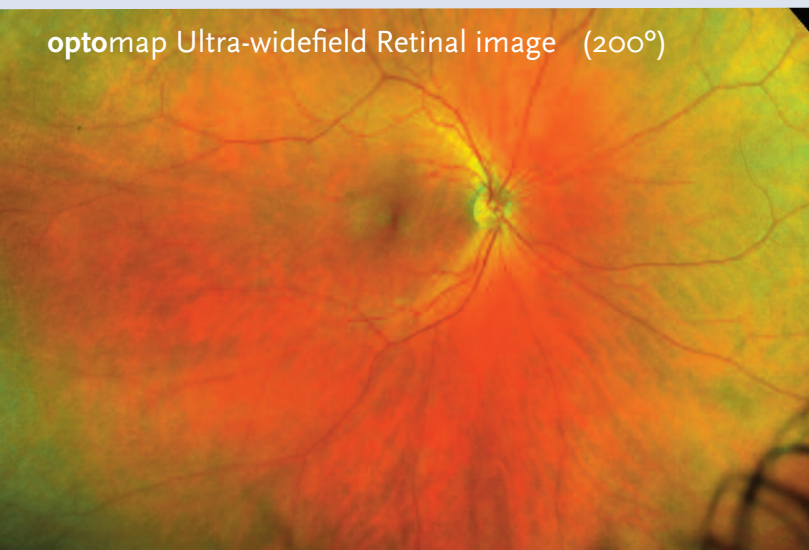


Comparison of Fields of View

An **optomap** retinal image compared to conventional devices in a single capture.

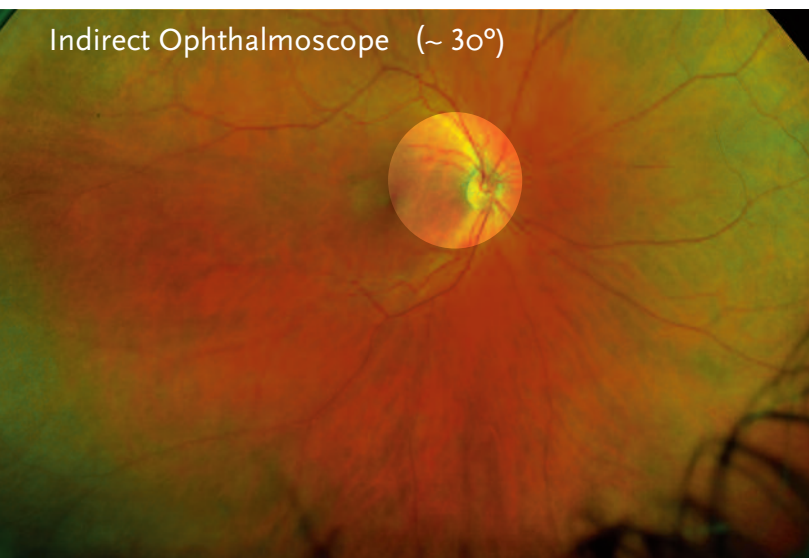
optomap Ultra-widefield Retinal image (200°)



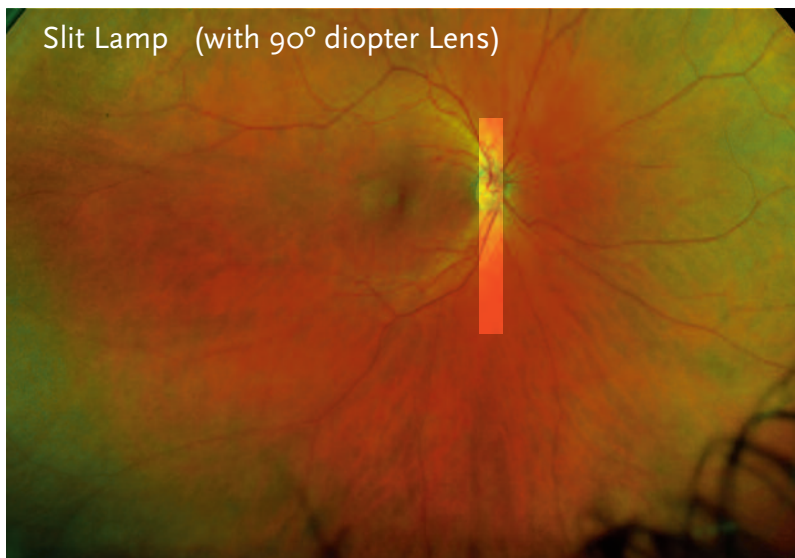
Fundus Camera (~45°)



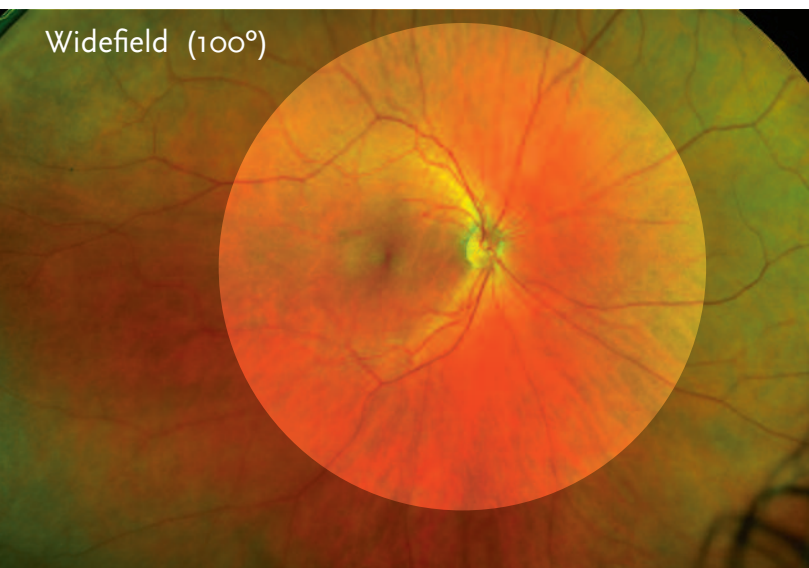
Indirect Ophthalmoscope (~30°)



Slit Lamp (with 90° diopter Lens)



Widefield (100°)



ETDRS Standard

