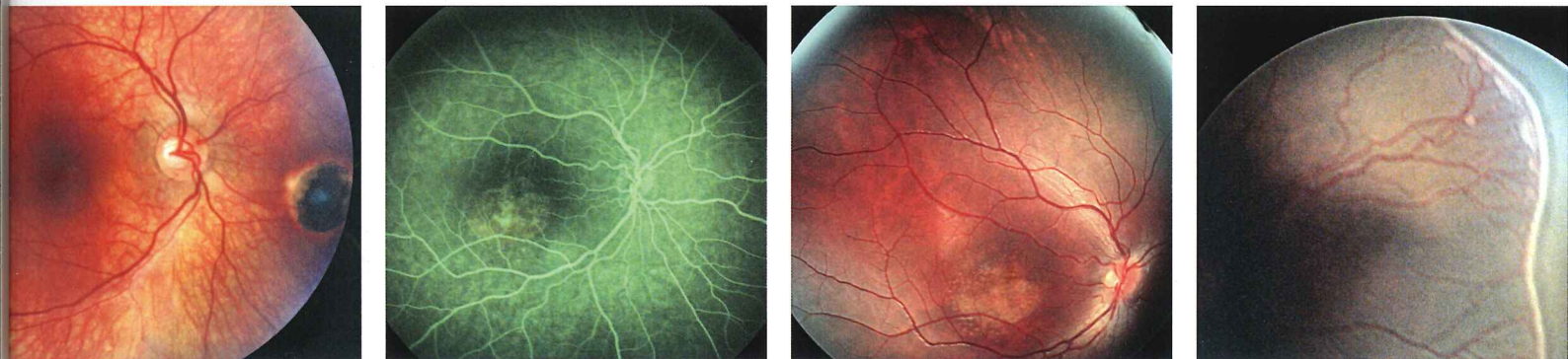




The future
has arrived



ICON

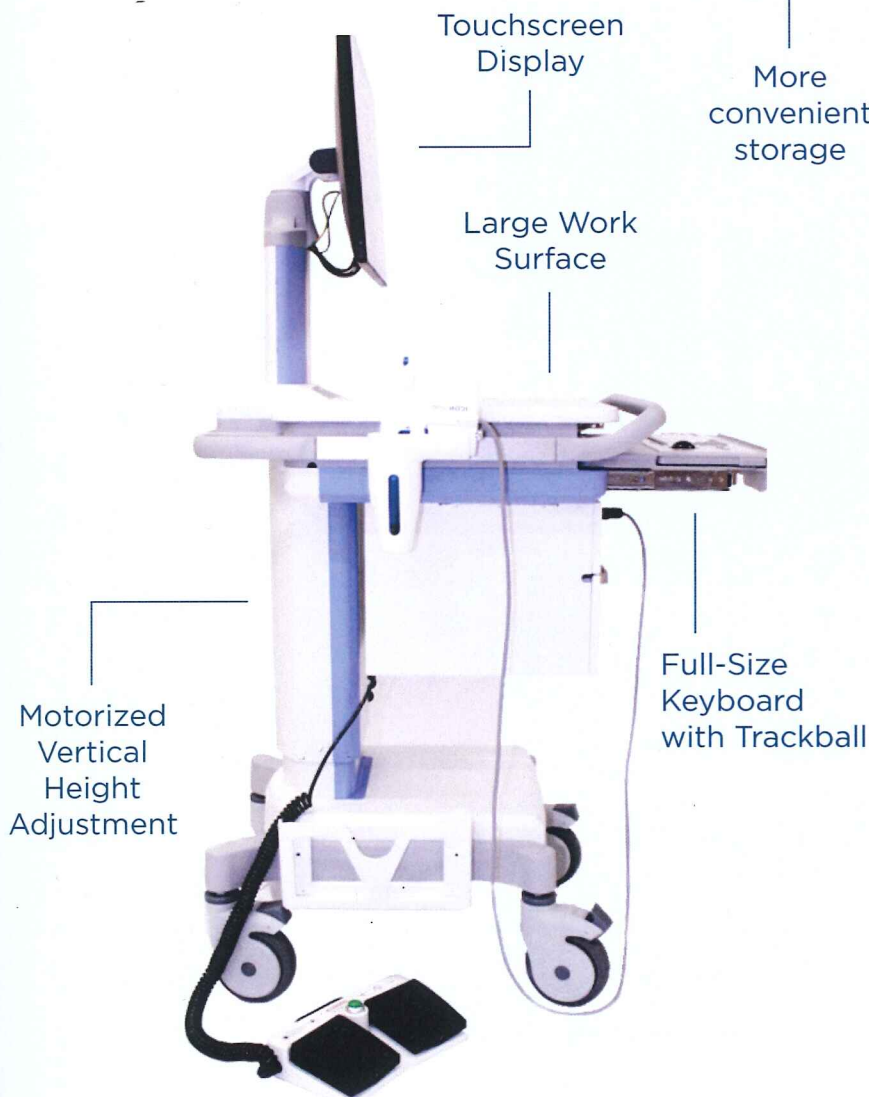
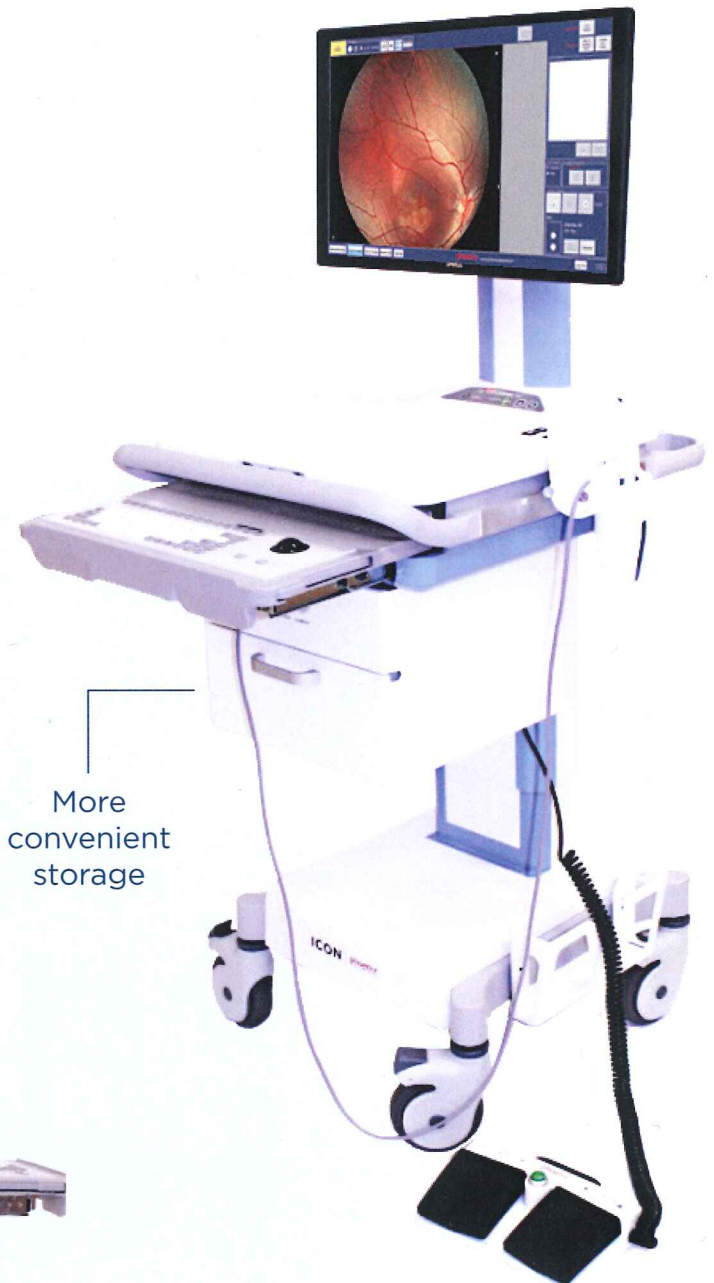
PEDIATRIC RETINAL CAMERA

ICON

PEDIATRIC RETINAL CAMERA

ICON is a hand-held wide field-of-view retinal camera optimized for pediatric patients to age eighteen. The design also targets high contrast imaging even with patients with darkly pigmented retinas. And, it provides very high resolution, even at wide-field, eliminating the need for multiple high-cost objective lenses.

ICON is light weight and connected to the cart by a USB cable. No bulky, heavy, or fragile fiber optic cable. The cart is light weight, move it with your fingers! This highly modernized design is in every way easy to use and provides images of unparalleled quality.



- Wide field-of-view with real-time display
- White light and fluorescein angiography available
- Light-weight LED light source integrated into camera

The Phoenix Clinical ICON™ without fluorescein angiography is available under the FDA product code PJZ in the US and is exempt from pre-market review [510(k)].

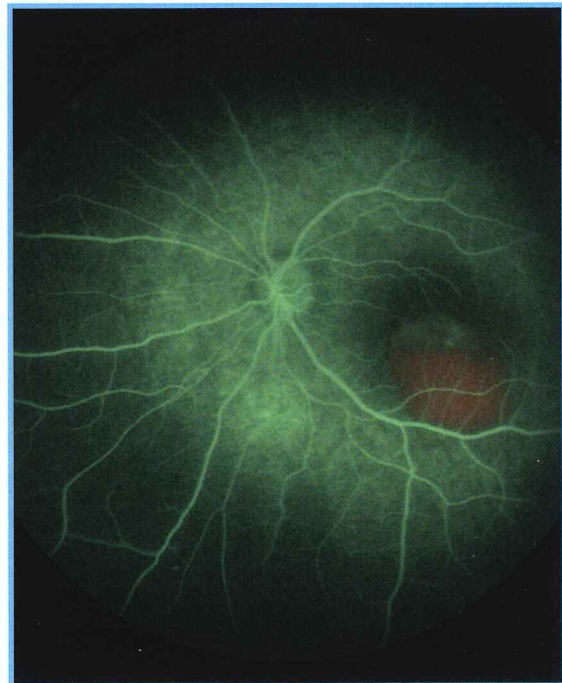
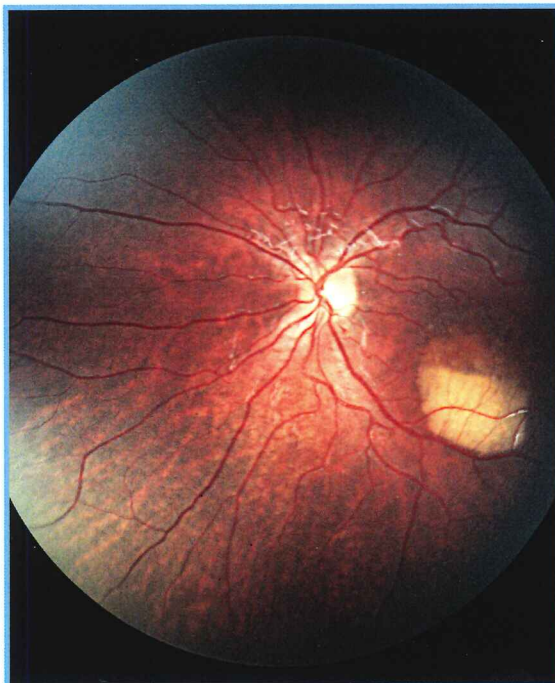
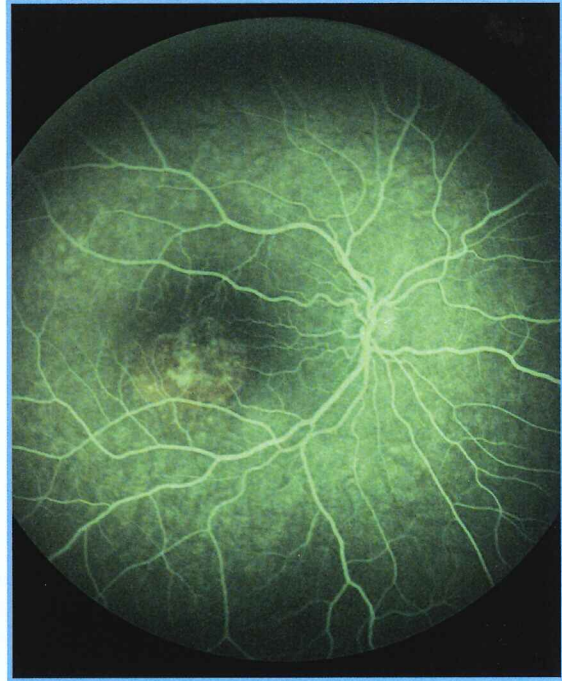
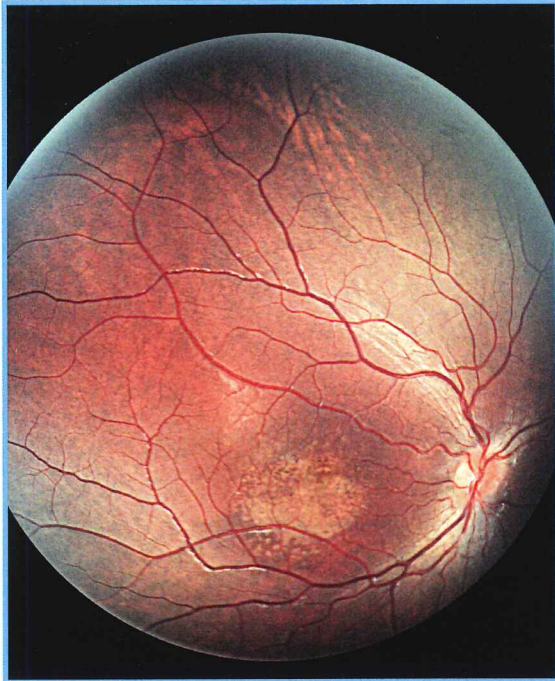
The Phoenix Clinical ICON™ with fluorescein angiography has been CE marked and is currently available internationally in select regions.

ICON

PEDIATRIC RETINAL CAMERA

Best Disease

Maculopathy



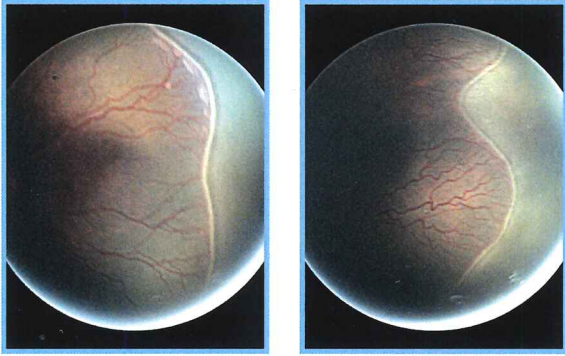
Images courtesy of Dr. Mike Trese, William Beaumont Hospital, Royal Oak, MI

ICON

PEDIATRIC RETINAL CAMERA

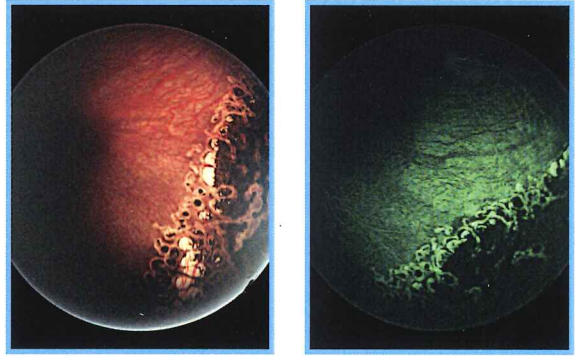
ROP

African-American, with Popcorn Lesions



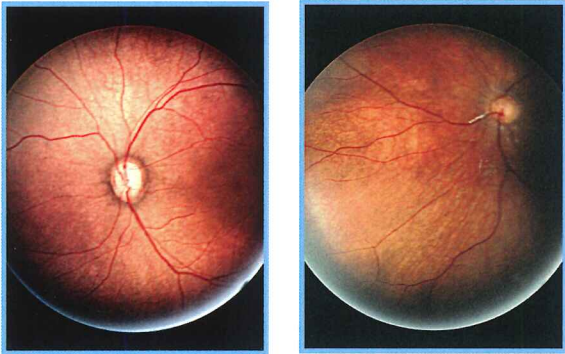
FEVR

Peripheral Laser



Wide-field Image

Dark fundi



FEVR

Stage 2B-FA

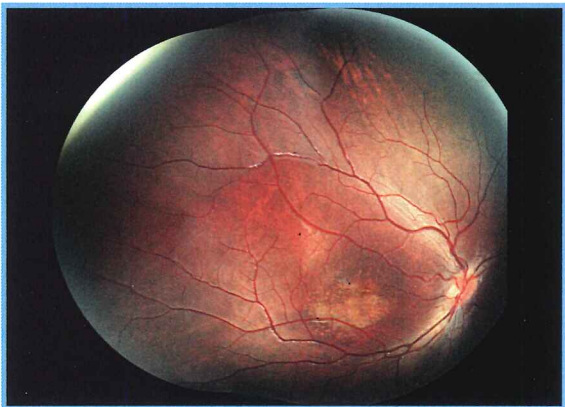


Wide-field Image

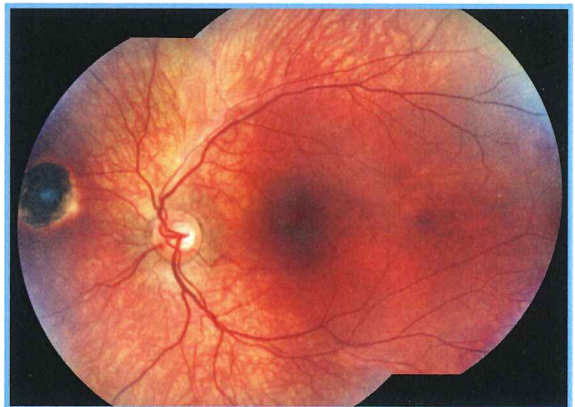
18 year old patient



Best Disease Montage



Montage of Chorioretinal Scar



6630 Owens Drive, Pleasanton, CA 94588
www.phoenix-clinical.com
925.462.5000
sales@phoenix-clinical.com

phoenix
CLINICAL
A PHOENIX TECHNOLOGY GROUP COMPANY